

INFINITY ANALYZE

Produce high quality images with the INFINITY ANALYZE, a complete image capture and processing software package for advanced imaging in the life science, clinical and industrial research markets. Easily capture and process images with excellent reproducibility and accuracy. The combination of INFINITY ANALYZE and INFINITY USB 2.0 microscopy cameras create the perfect solution for all your imaging needs.

Camera Control

Produce high quality images with INFINITY ANALYZE's advanced features. Optimize your workflow by customizing the layout to your preference and save an unlimited number of unique user settings. Easily manage and organize your images with simple save features.



Included Features:

Basic Controls

Real time preview, manual/auto exposure, white balance, gain, brightness, gamma, saturation, intensity, hue, image orientation, averaging, subsampling, light source selection, clockwise/counter clockwise, flip vertical, flip horizontal, flip diagonal, zoom preview, cascade, tile horizontal, tile vertical, INFINITY3-1 cooling control.

Capture Options

Single capture, time lapse, auto increment filename, single key capture.

Image Processing and Archiving

Quickly process, archive or save images with a variety of applications and formats. Easily perform and reproduce measurements and annotations that can be customized to your needs. Effortlessly manage and retrieve images within this built-in database.

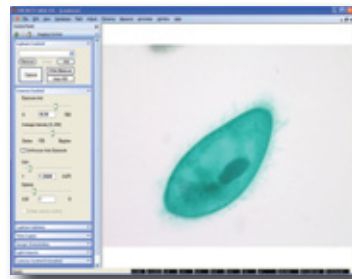
Measurement

Point-to-point, polyline, circle from 3 points, area, perimeter, polygon, manual counting, light density, micrometer, grid/circle overlay, manual calibration, drag and drop data to excel.

Command	Parameter	Value
Caliper	Distance	125.16
Caliper	Distance	170.00
Caliper	Distance	153.17
Caliper	Distance	155.63

Annotation

Line, rectangle, round rectangle, ellipse, polygon, arrow, text.

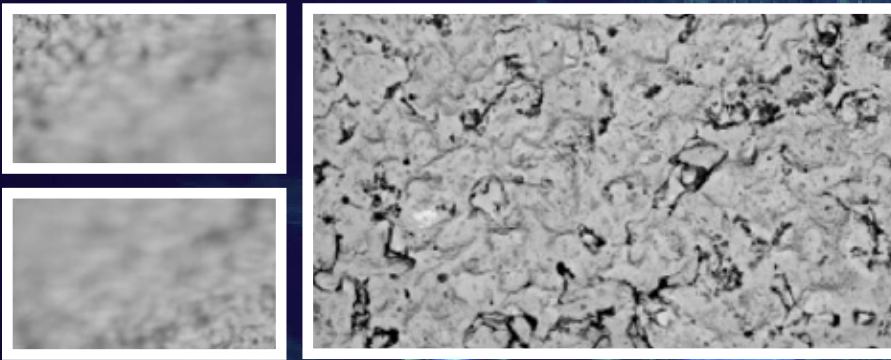


Advanced Image Processing

Multiple image averaging, subsampling, flat field correction, denoise, unsharpen, adaptive edge emphasis, sketch, equalization, amplitude depletion, darkfield simulation, photometric transform.

Image Math

Combine, max, min, average, split, subtract, divide.



Multi - Focus Enhancement

Advanced Features Module*

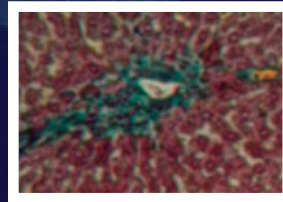
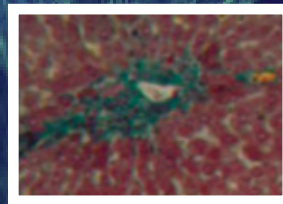
Multi-Focus Enhancement

Multi-focus enhancement creates depth of focus using multiple images from a stereo or compound microscope. The resulting image is focused from top to bottom and leaves no trace of the original images.

Spherical Aberration Correction

Spherical aberration correction reduces the blur caused by the increased refraction of light rays hitting a lens near its edge, in comparison with those that strike near the center.

* Advanced Features Module is a separately priced option. Contact your local dealer for more information.



Spherical Aberration Correction

Software Appearance and Help Menus

Customize the layout of INFINITY ANALYZE to optimize your workflow through the addition or removal of tool bars and work spaces, as well as access help menus for each software feature. A field group menu provides a thumbnail worksheet to easily manage multiple images.

Field Menu

The field group menu in INFINITY ANALYZE is a buffer of images with a thumbnail displayed for each cached image. The field group can be the destination for captured images or it can act as the input for multiple image processing such as fluorescent combination or stitching options.

User Defined Interface

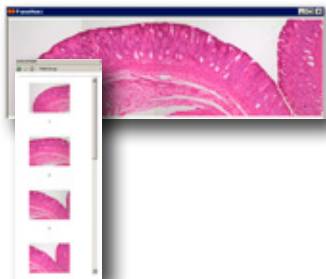
Add/remove/customize tool icons.

Help Section

Active help boxes for each software function are provided.

Stitching

Stitch small images into a large seamless image along vertical or horizontal planes.



Full Screen Mode

The live preview and captured images can be displayed at full screen. Size with the simple keystroke or menu selection allowing the full size of your display to be used for the image.

Fluorescence Image Composition

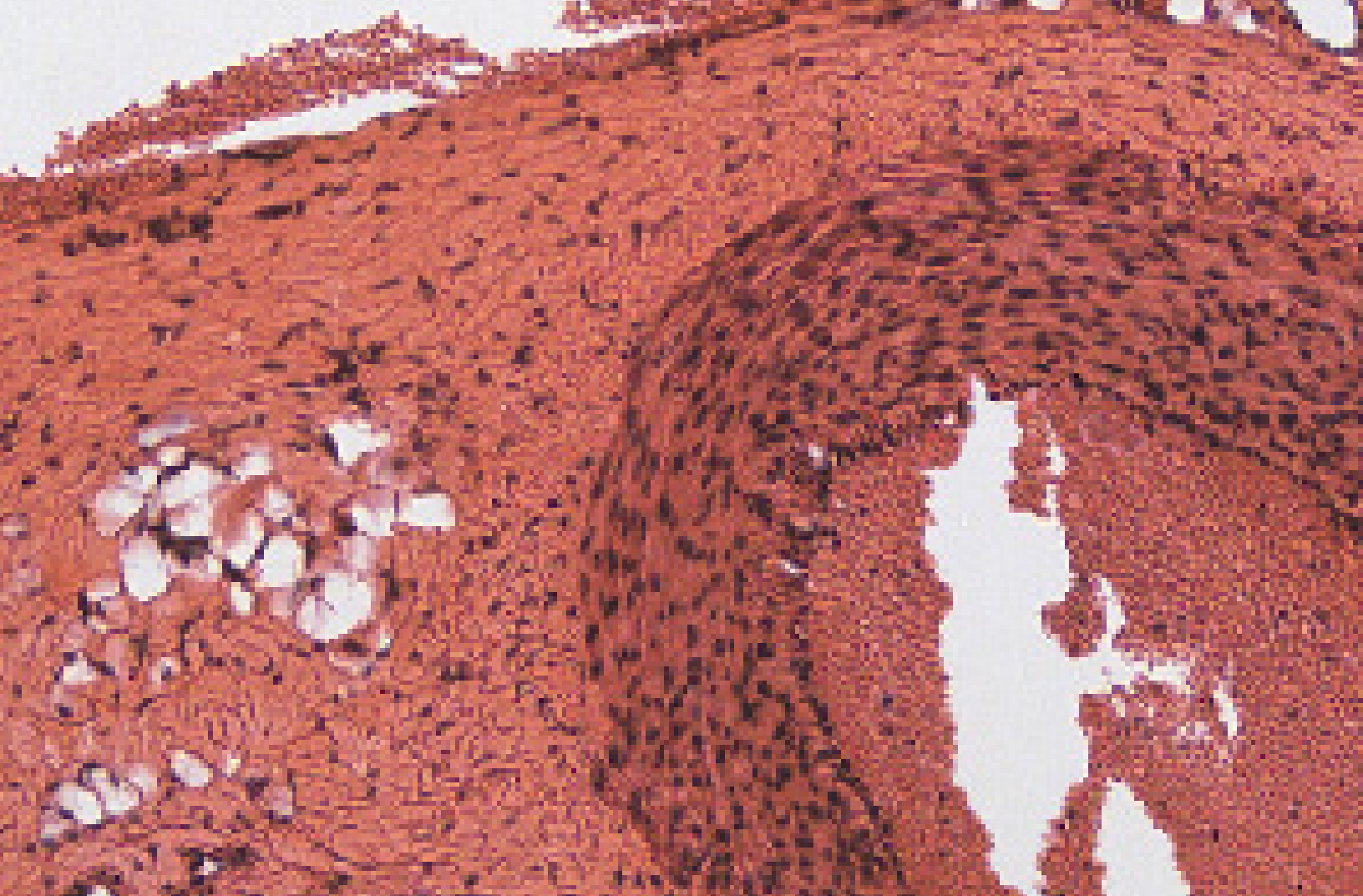
Create a composite image from monochrome fluorescent images captured through mono channel filters, and apply RGB Look-Up-Tables (LUT).



Database/Archive

A custom database system that is accessible whenever the software is running has been built into INFINITY ANALYZE. All the information content of an image together with its quantitative measurement results, date of creation, author and description may be archived. The database can be either local or stored on a network drive for easy archiving.

No.	Caption	Date	Author	Description
11	Aluminum corrosion test 2-DIC 1280x1024	2008-05-25 10:26:59	John	Slide Post
12	Steel wear 2-DIC 1280x1024	2008-05-25 10:27:57	John	Slide Post
13	Ferrous 2-DIC	2008-05-25 10:34:59	John	Slide Post



7 Capella Court, Ottawa, ON, Canada K2E 8A7
Phone: 1.613.736.4077 Fax: 1.613.736.4071

scientificsales@lumenera.com
www.lumenera.com