

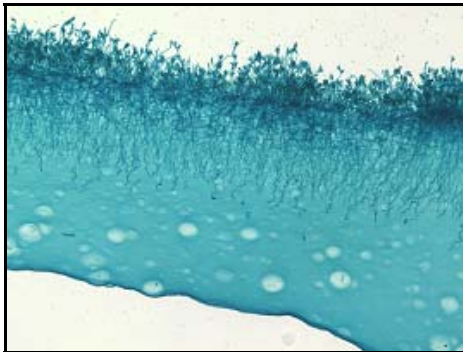


## 5.0 Megapixel CMOS USB 2.0 Camera

High Resolution CMOS  
Microscopy Camera for Qualitative Image Archiving

## Outline

Lumenera's INFINITY 1-5 digital camera is designed to be a cost-effective, versatile solution for documentation and archiving of clinical, life science, and industrial imaging where higher resolution is routinely required. With 2592x1944 resolution and on-board processing, the INFINITY 1-5 delivers outstanding image quality for a wide variety of scientific applications.



Live video preview provides for real-time focus, while auto exposure and auto white balance efficiently capture your optimal image. An intuitive user application provides camera controls, while full integration to popular third-party imaging applications is available through our TWAIN drivers.

The USB 2.0 digital interface ensures a simple plug and play installation – and one standard cable minimizes camera clutter. No framegrabber required.

Every INFINITY camera includes [INFINITY ANALYZE](#) software for advanced camera control, image processing, measuring and annotation, as well as INFINITY CAPTURE.

INFINITY 1-5 is supported by an experienced team of technical support and imaging experts. We understand your imaging needs and are here to help you get the most out of your camera.

## Performance Features

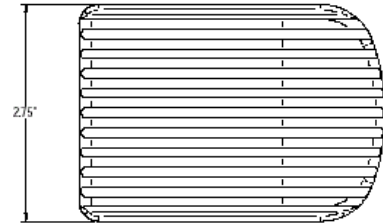
- ❑ **The high-speed USB 2.0 interface eliminates a framegrabber and facilitates ease of installation on both laptop and desktop computers**
- ❑ **The low noise characteristic of the INFINITY 1-5 progressive scan 5.0 megapixel image sensor results in crisp color quality for the most demanding brightfield and darkfield microscopy applications including clinical pathology and cytology, life science and geology**
- ❑ **Full color sub-windowing allows for rapid focus and scanning of samples: 7 fps at full 2592x1944 resolution and 60 fps at 640x480 resolution**
- ❑ **Selectable 8 & 12-bit pixel data modes**
- ❑ **The RGB data captured through each pixel contains 36-bits of color image information resulting in 4096 intensity values**
- ❑ **Camera control through INFINITY ANALYZE, an intuitive user interface results in rapid image capture archiving and documentation for high throughput applications, demanding research environments and teaching facilities**
- ❑ **TWAIN compatible**
- ❑ **The INFINITY 1-5 has a compact design equipped with a C-Mount facilitating installation on all microscope configurations including upright, inverted and stereo**
- ❑ **INFINITY cameras are software compatible with Windows 2K, Windows XP and Windows Vista operating systems**
- ❑ **MAC compatible**

# Specifications

# INFINITY 1-5

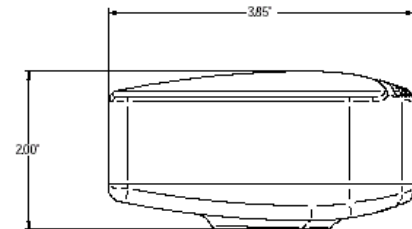
## Camera Sensor

Image Sensor	1/2.5" format, CMOS, color or mono, 5.7mm x 4.28mm array
Effective Pixels	2592 x 1944, 2.2µm square pixels
Frame Rate	7 fps at 2592x1944, 60 fps at 640x480
Dynamic Range	>60dB
Digital Output	8 and 12-bit uncompressed
Read Out Frequency	28 MHz



## Camera Controls

Dimensions (W x H x D)	3.85 x 2.00 x 2.75 inches
Mass	300g
Power Requirement	USB bus power, or external 5VDC - 500mA
Power Consumption	~2.5Watts
Operating Temperature	0° C to +50° C
Operating Humidity	5%-95%, Non-condensing
Integration Time	1/1000 to 3 sec.
Shutter	Rolling shutter with single frame capture
ROI	User Selectable
Auto Exposure	Automatic / Manual
White Balance	Automatic / Manual
Gain	Programmable / 1 to 10X optimizable
Interface	USB 2.0 high-speed interface
Lens Mount	C-Mount lens adapter



## Recommended PC Specs:

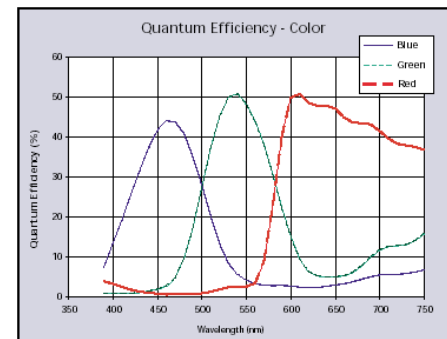
- Pentium 4, 1.3 GHz or higher
- 512 MB RAM
- 60 MB hard drive free space or more
- USB 2.0 Port
- Windows 2000, XP or Vista

## Minimum PC Specs:

- 600 MHz Processor
- 256 MB of SDRAM
- 20MB hard drive free space
- USB 2.0 Port

## Product Includes:

- INFINITY 1-5 digital camera for USB 2.0
- CD-ROM with INFINITY user application software
- TWAIN driver
- Documentation
- USB 2.0 cable



## Ordering Information

INFINITY 1-5C – 5.0 Megapixel Color Camera

INFINITY 1-5M – 5.0 Megapixel Monochrome Camera

LuSDK – Software Developer's Kit

**Full customization available  
to meet your exact needs!**